

## Greenways promote:

- The **preservation of cultural heritage**: former railways, waterways, works of art.
- Active **mobility** for daily commuting (work, school, shopping), **leisure**, and **tourism**.
- Rural development**, active and **sustainable tourism**, and **local employment creation**.
- The creation of a wide range of **services for users**: cycle maintenance and hire, information, accommodation, etc;
- A **healthier** and more balanced **way of life** and **transport**, reducing congestion and pollution in cities and helping to tackle climate change.
- Public participation and environmental awareness**.

Greenways have played a major important role during COVID by providing safe and accessible infrastructure for outdoor activities, contributing greatly to people's physical and mental well-being.

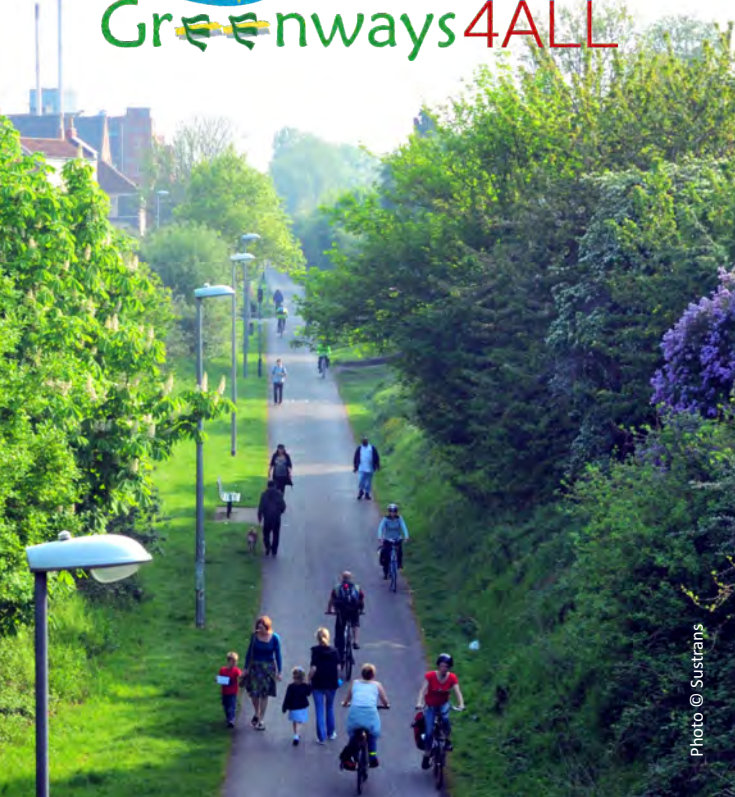


Photo © Sustrans

## What is a Greenway?

"A communication route reserved exclusively for non-motorized journeys, developed in an integrated manner to enhance both the environment and quality of life of the surrounding area. Such a route should meet satisfactory standards of width, gradient, and surface condition to ensure that it is both user-friendly and low-risk for users of all abilities. In this respect, canal towpaths and disused railway lines are highly suitable resources for the development of greenways." (Lille Declaration 12<sup>th</sup> September 2000).

The greenways offer a great alternative for active mobility, due to their **common characteristics**:

- User-friendly**: their slopes, either low or zero gradient, allow their use by all types of users, including mobility-impaired people.
- Safety**, due to their separation from roads.
- Continuity** with suitable solutions for any difficulties and alternative routes.
- Respect for the environment** along itineraries and encouraging its respect by the users.

## Discover Europe through the greenways

Thousands of kilometres running all over Europe are available for cyclists, pedestrians, and mobility impaired people. They give easy access to places of great beauty, e.g. in mountainous areas, through tunnels, and over viaducts. These infrastructures are highly appreciated in cycle tourism networks because they are extremely safe, accessible to everyone, and user-friendly.

[www.aevv-egwa.org](http://www.aevv-egwa.org)

# Greenways

Enhancing heritage for walking and cycling, for locals and tourists alike.



ASSOCIATION EUROPÉENNE DES VOIES VERTES  
EUROPEAN GREENWAYS ASSOCIATION  
ASOCIACIÓN EUROPEA DE VÍAS VERDES

Photo © Limerick City & County Council



# European Greenways Association

A network of organizations committed to the promotion of greenways in Europe for active mobility, sustainable tourism, and healthy leisure; for all types of users and better quality of life.

**The European Greenways Association (EGWA)** was created in 1998 in Namur (Belgium) to encourage the creation and promotion of greenways in Europe. It brings together some 50 different organizations from 15 European countries involved in the development of greenways.

**Since its creation in 1998, the European Greenways Association:**

- Contributes to the **preservation of infrastructures** such as disused railways and canal towpaths with the aim of converting them into traffic-free routes and maintaining public access to the land.
- Promotes **active mobility** through greenways and non-motorized routes.
- Promotes **sustainable tourism** and encourages a more attractive and structured service offer around greenways to make the most of them, both for local communities and visitors.
- Participates in **European Commission expert committees** on tourism **and other relevant forums** to ensure greater recognition of greenways at European level.
- Informs and advises** national, regional, and local bodies on how to develop safe and accessible traffic-free routes, and to improve their international promotion.
- Promotes and coordinates the **exchange of information and experiences** between the different national and local associations and organizations that develop similar initiatives in Europe.
- Lobbying and awareness-raising** on the benefits of greenways in order to push for their inclusion in European policies and budgets.

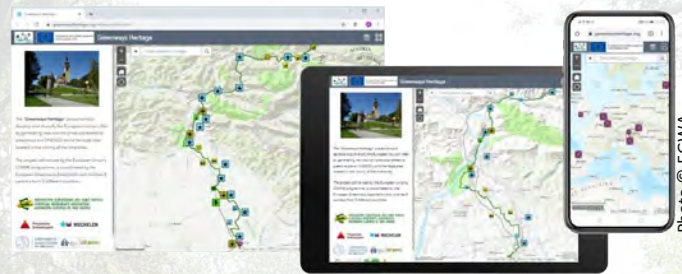


Photo © EGWA

## What does EGWA offer you?

- Dissemination** of **activities and projects** among all its members, as well as outside the association.
- Possibility to **participate in EU projects** and **European events**.
- Promotion** of the **members' greenways** to an international audience.
- Possibility to **promote your own network of greenways** on our website and the European Greenways Observatory.
- Information on the main **EU policy initiatives and funding priorities**, which have an impact on the **development of greenways, and recommendation of actions to undertake, to address the main challenges of each time**.
- Exchange** of ideas and **best practices** at European level and meet new partners.
- The best place to participate in the development of the **European Green Network (REVER)**.



Photo © EGWA

## Support EGWA

Please contact us for more information on the different partnership and sponsoring opportunities available.

### Executive seat

Fundación de los Ferrocarriles Españoles  
c/Santa Isabel, 44, 28012 Madrid (Spain)

Tel: +34.91.151.10.98

info@aevv-egwa

www.aevv-egwa.org

### Social seat

Rue Van Opré, 97 - 5100 Namur – Belgium

## EGWA's main initiatives

- **European Greenways Award**
- **European Projects**
- **Conferences**
- **Workshops and technical events**
- **European Greenways Observatory**
- **European Greenways Day**



Photo © GVA/Territori



Photo © Basquetour - Quintas



Photo © EGWA

## Join EGWA! Together We Are Stronger

50 members from 15 countries support EGWA. Our members are very diverse, coming from the public, private, and non-profit sectors. They include government administrations at national, regional, and local level; greenway managers and promoters; public transport companies; environmental and cultural associations and foundations, as well as private companies.



Photo © EGWA



Photo © Vennbahn.eu