

GREENWAYS, A MUST TO SUSTAINABLE TOURISM

OUR WAY: STEPS TAKEN IN THE PODKARPACKIE REGION

Antoni Jez

Marshal's Office of the Podkarpackie Region

OUR WAY
Interreg Europe

PODKARPACKIE
infinite possibilities



WHERE DID WE START FROM?

Regional Strategy of Innovation of the
Podkarpackie Region 2014-2020

OUR WAY
Interreg Europe

PODKARPACIE
infinite possibilities

STRENGTHS

- Natural and cultural attractiveness of the Region giving potential for the development of active tourism;
- Diversity of terrain and landscape;
- Activity of cyclists' organizations;
- Border location (Slovakia, the Ukraine) and transport accessibility of the Region;
- Human potential and developing cooperation of local/regional governments and organizations in the Region.

WEAKNESSES

- Small number of branded, high-standard tourism products and underdeveloped tourism infrastructure;
- Inconsistency of routes and deficiencies in bicycle infrastructure;
- Safety - small number of routes independent of public roads and lack of the consistent trails network;
- Lack of standards for design and construction of bicycle routes and lack of traffic monitoring on routes.



WHAT HAVE WE LEARNED?



TOP 3

- **Development greenways network** – based on the BP from Ireland (National and Regional Greenways Development Strategy);
- **Management of the trails** - based on experience of Murcia Region (consortium), using technical solutions (counters, etc.);
- **Promotion of the cultural and natural heritage objects** available from the trails – based on Bulgarian experience (POI, local loops).

• • •

The most important word is **COOPERATION** - at the local/regional level and the opportunity to learn from the experience of the partners. Interreg Europe **BRINGS TOGETHER PEOPLE** who want to change and improve the reality in which they live. Over 130 people from Podkarpackie Region have increased their knowledge during the project.

• • •

We have learned that **EUROPE IS COMMON**; we have the same problems and similar expectations. We can learn from each other to achieve goals that are important to us. Cooperation won't end with the end of the project: new ideas, friendships, acquaintances and lifelong contacts will remain.



WHAT HAVE WE DONE?



1 Change of the Strategic documents of the Region



Samorząd Województwa Podkarpackiego



Strategia rozwoju województwa
- Podkarpackie 2030

Rzeszów, wrzesień 2020 r.



Załącznik Nr 1 do Uchwały Nr 351/6976/22
Zarządu Województwa Podkarpackiego
w Rzeszowie z dnia 11 stycznia 2022 r.

Regionalna Strategia Innowacji
Województwa Podkarpackiego na lata
2021-2030



Rzeszów, 2022

Projekt współfinansowany ze środków Unii Europejskiej w ramach
Europejskiego Funduszu Rozwoju Regionalnego



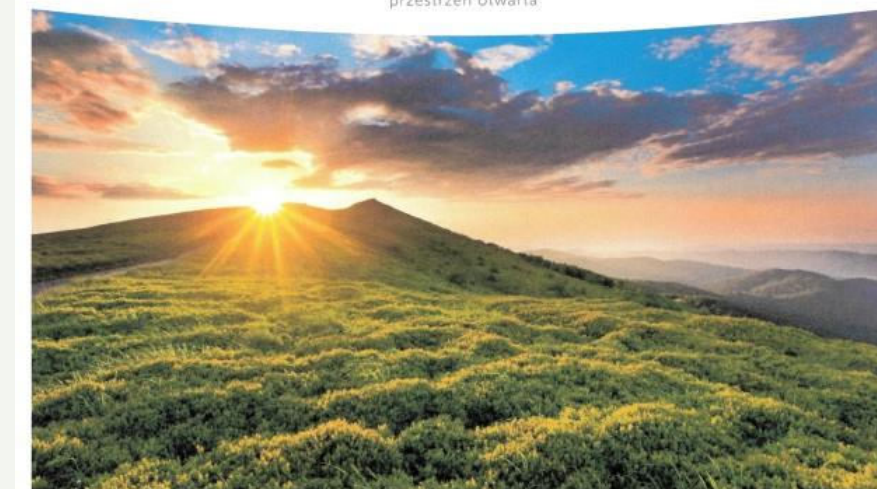
Załącznik do Uchwały Nr 351/6977/22
Zarządu Województwa Podkarpackiego
w Rzeszowie z dnia 11 stycznia 2022 r.

ZARZĄD WOJEWÓDZTWA PODKARPACKIEGO

PROGRAM STRATEGICZNY
ROZWOJU TRANSPORTU
WOJEWÓDZTWA PODKARPACKIEGO
DO ROKU 2030

PROJEKT

Rzeszów, styczeń 2022



FUNDUSZE EUROPEJSKIE
dla Podkarpacia 2021-2027



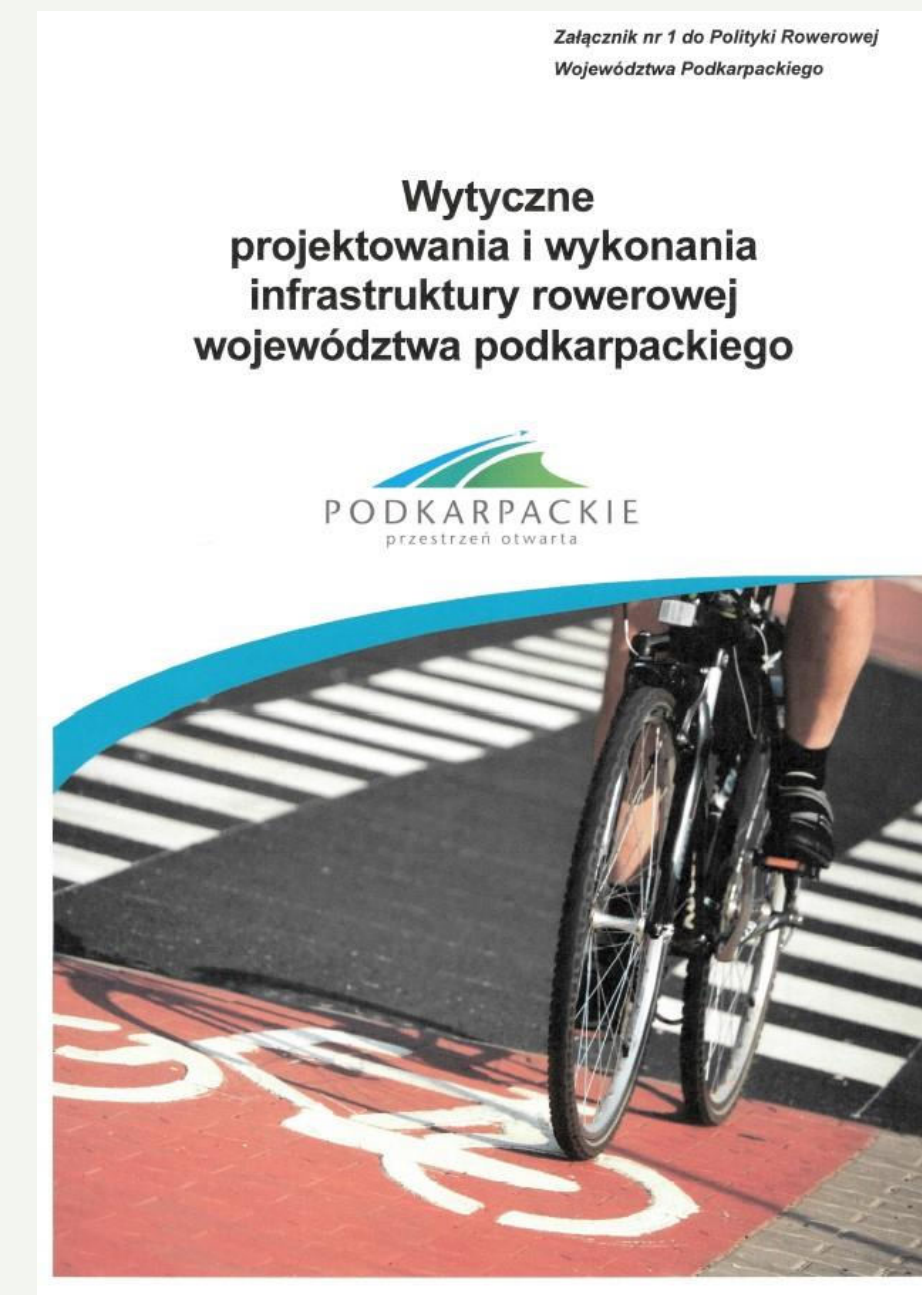
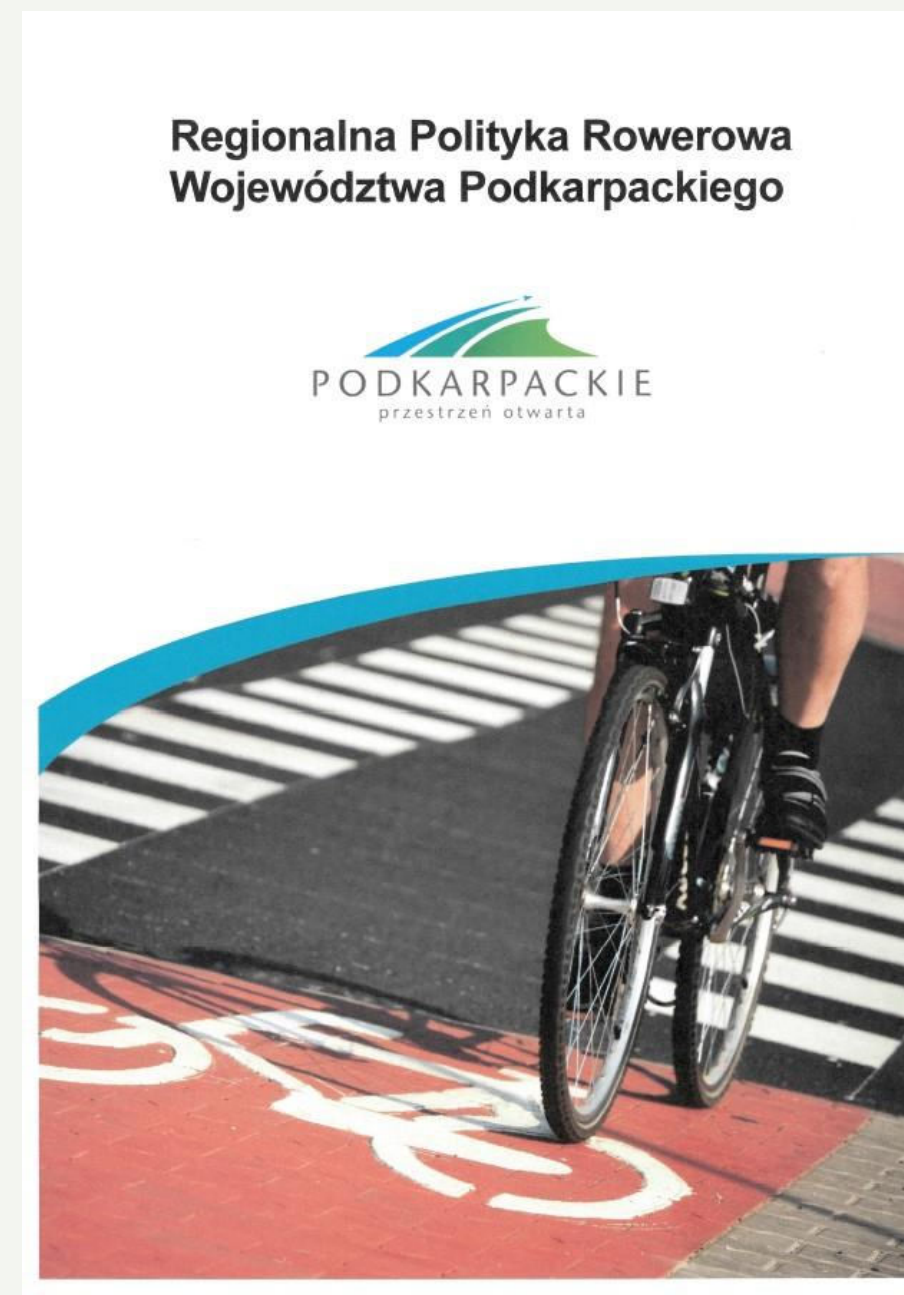
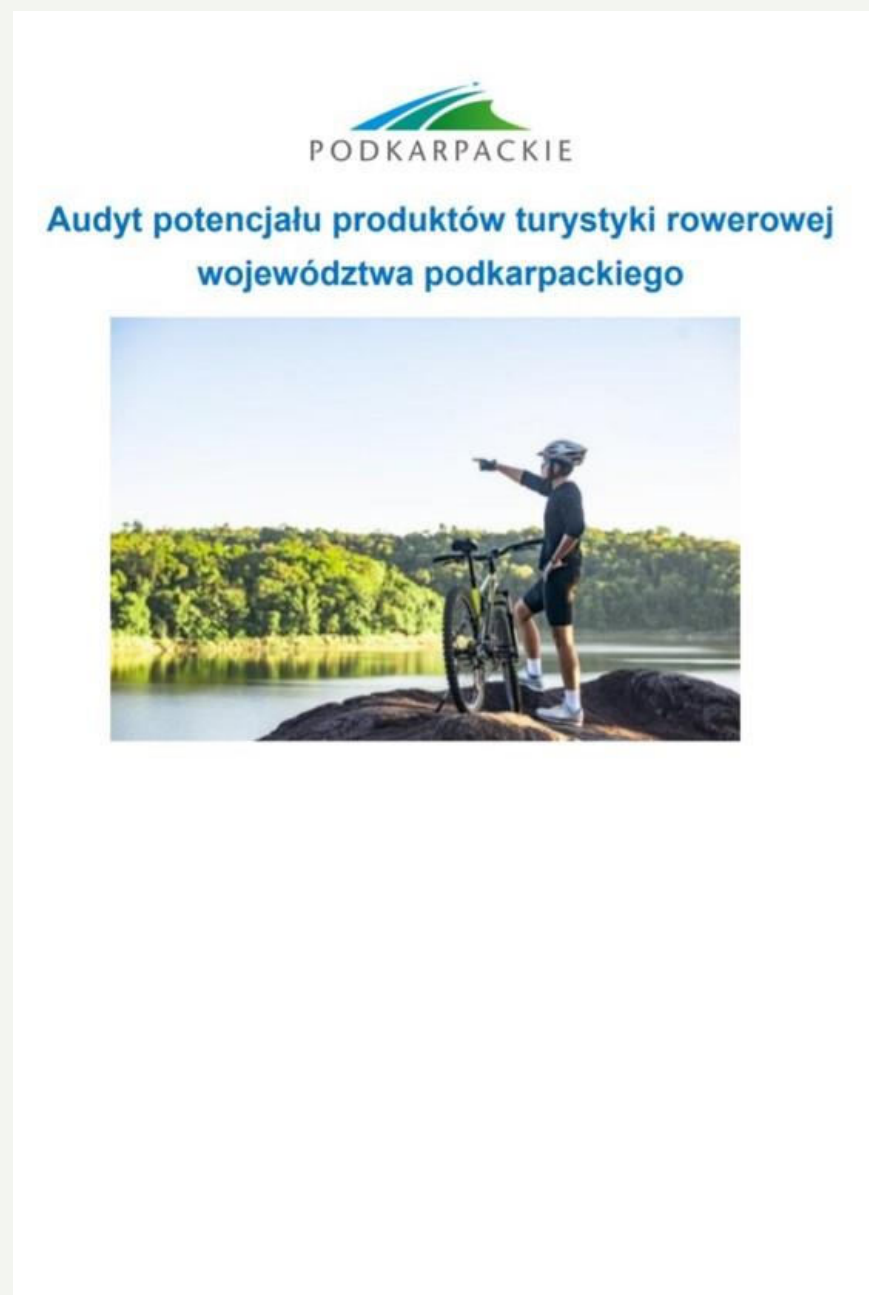
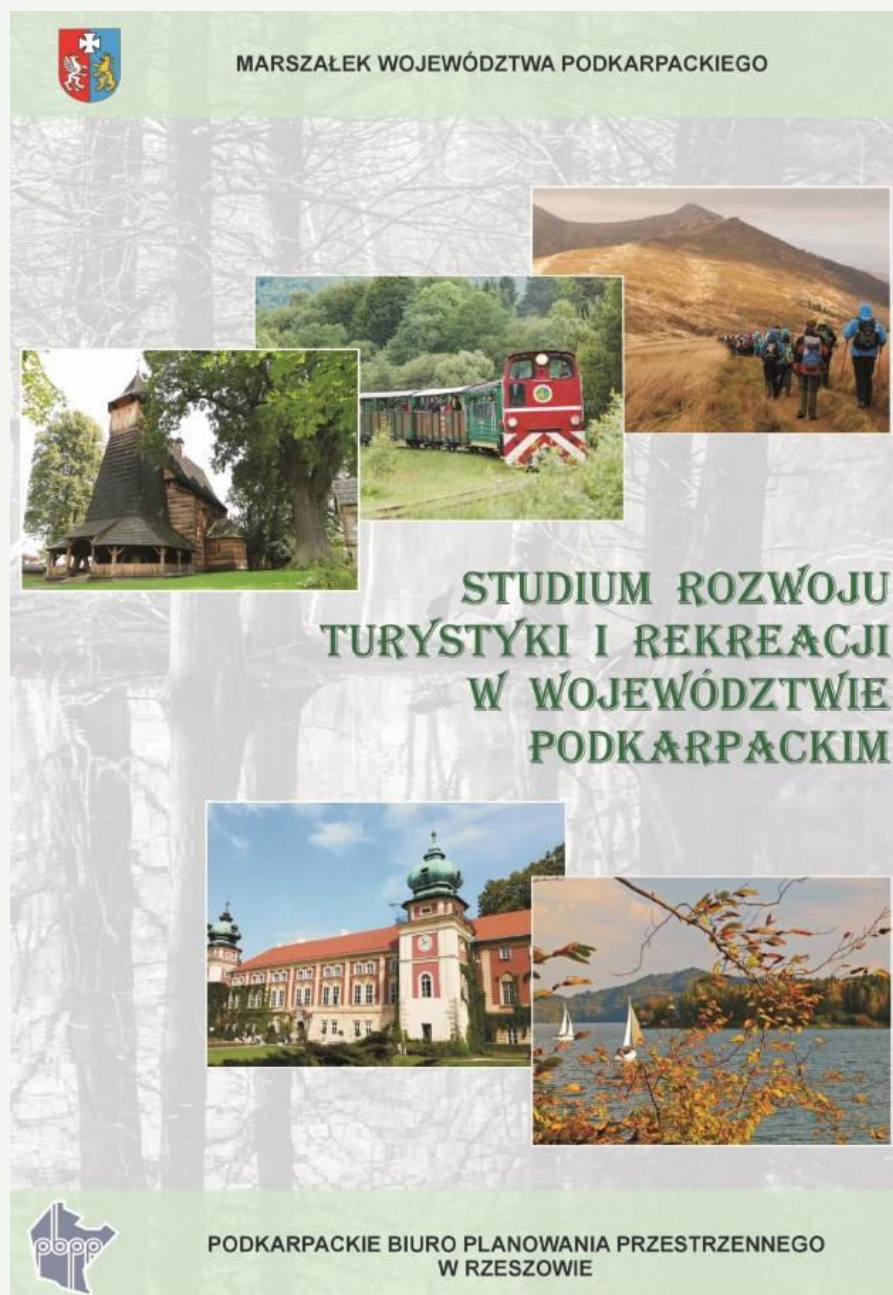
Zmień swoją perspektywę



WHAT HAVE WE DONE?



2 Bicycle Policy and Conception of the Main Trails

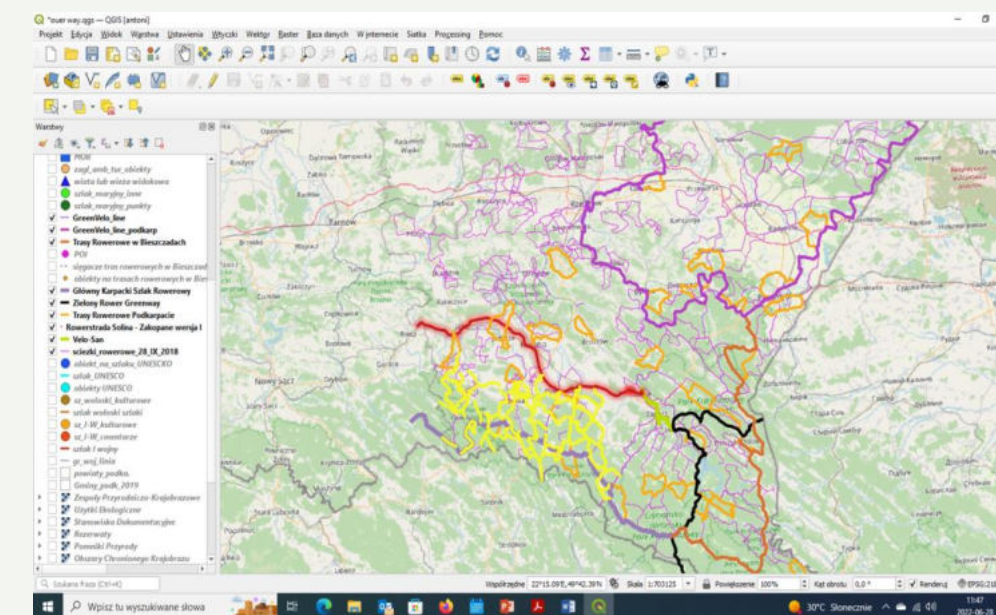
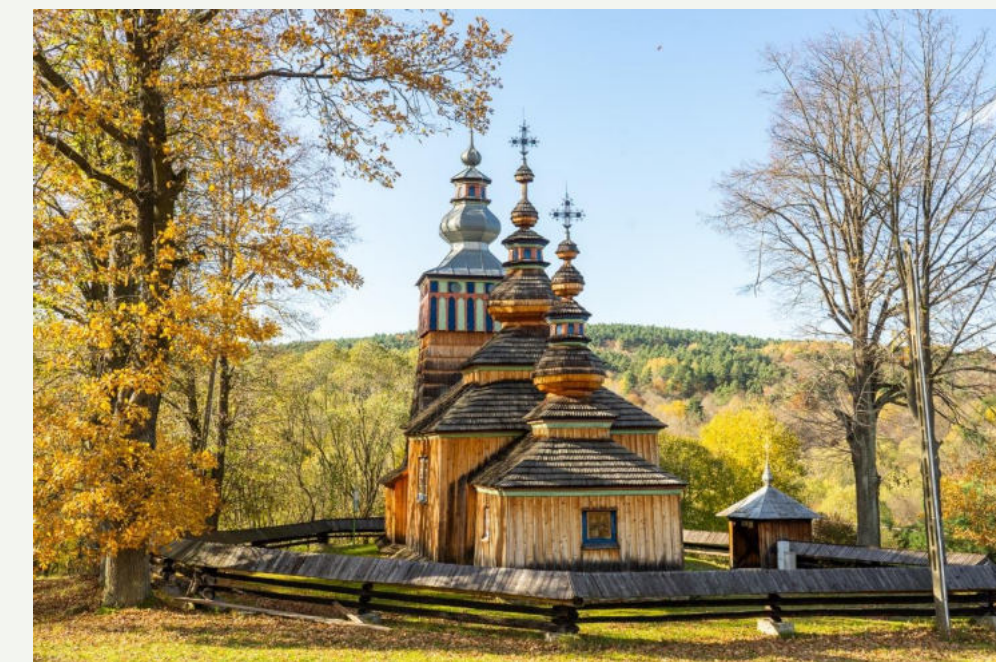
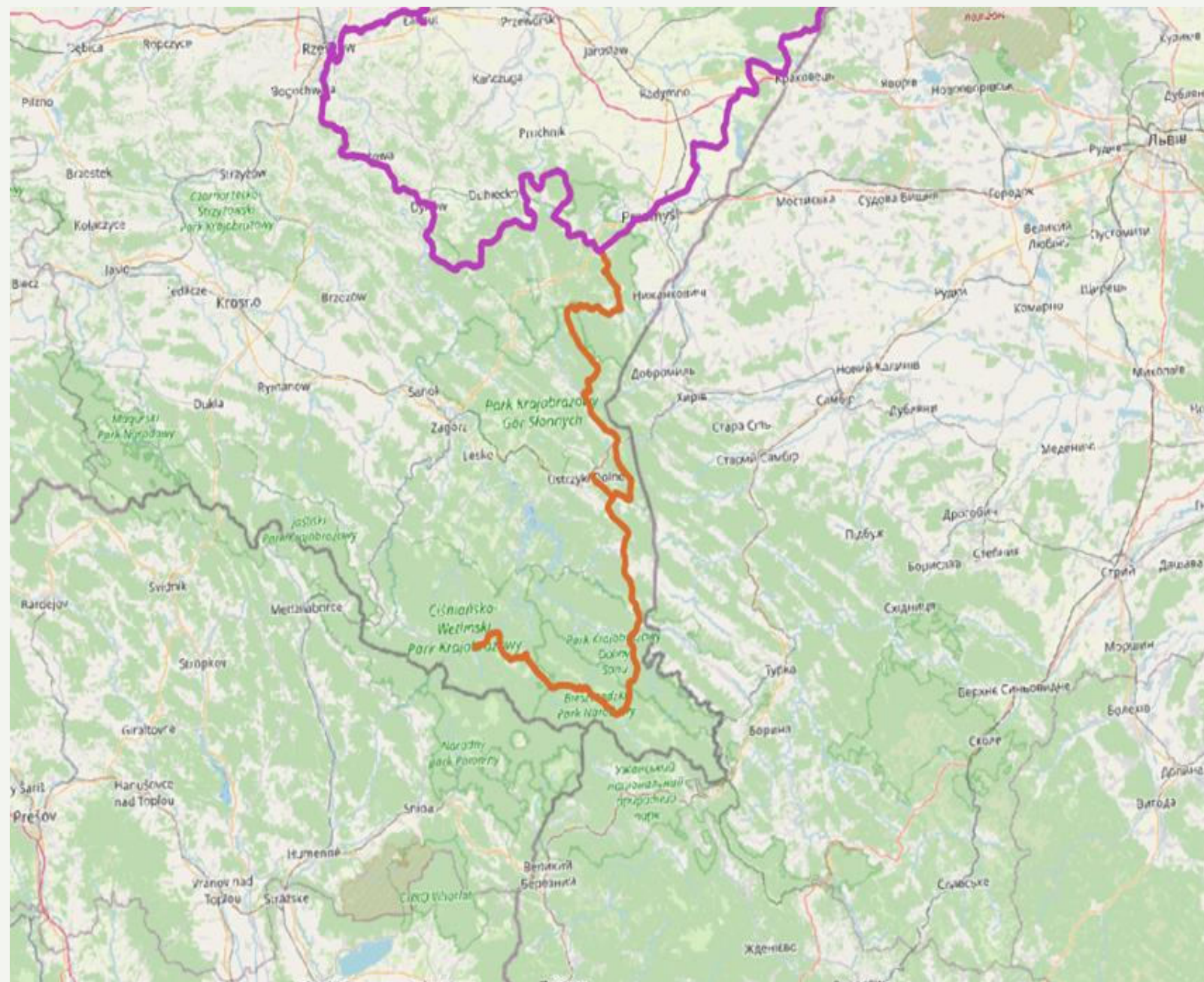




WHAT HAVE WE DONE?



3 Technical documentation of the Bicycle Trails in Bieszczady





WHAT HAVE WE DONE?



4 Regional Working Group – experts & enthusiasts support



NEXT STEPS

1

Obtaining funds for the construction of more than 170 km of bicycle routes in the Bieszczady Mountains.

2

Design and construction of the Vistula Bicycle Route in the Podkarpackie Region in cooperation with the other regions.

3

Construction of new routes (e.g., the Solina-Zakopane Bicycle Route) with established standards and connection of bicycle routes into a network.

4

Preservation and promotion of the natural and cultural values of the Podkarpackie Region with the use of bicycle routes and greenways.

5

Continuing cooperation with associations and entities interested in the development of bicycle routes and greenways trails.



OUR WAY
Interreg Europe

PODKARPACKIE
infinite possibilities



THANK YOU!

Antoni Jez
Marshal's Office of the Podkarpackie Region
<https://podkarpackie.pl/>
a.jez@podkarpackie.pl

