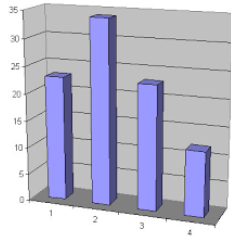


Vennbahn Cyclist Data

Gudrun Hunold - Fachbereich Sport, Medien, Tourismus



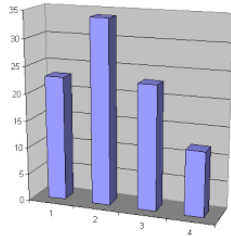
Counting started in
June 2014

Co-financed via the
INTERREG-
programme

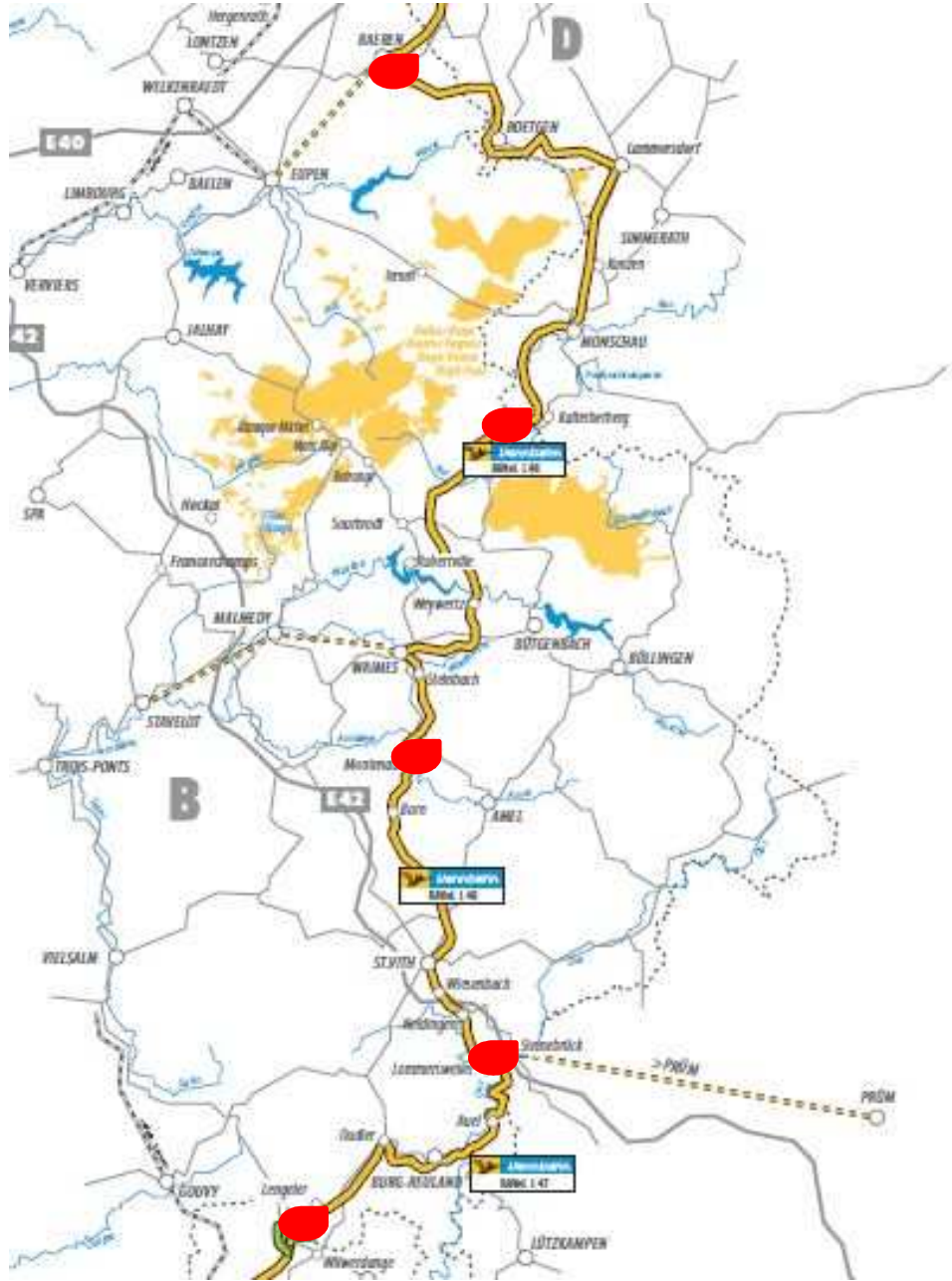
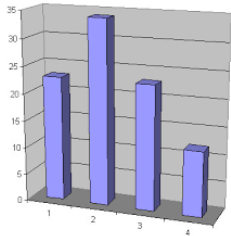
4 loop sensors and
1 infrared counter



TARGETS

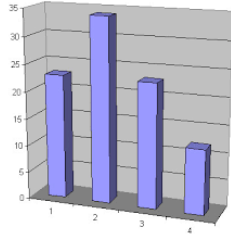


- Total number (return on investment)
- Directions and flow
- Seasonality
- Optimize trail operations & maintainance
- Asses efficiency of investments (infrastructure, marketing...)





MONITORING BICYCLES ON GREENWAYS

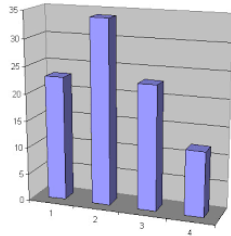


- Power supply?
- How to distinguish bikers from pedestrians?
- How to count every bicycle also within a group?
- How to get your data?
- Maintenance?



DEVICES: « ETUBE BIKE »

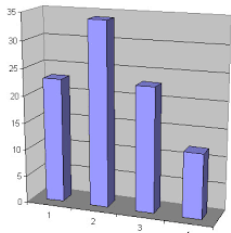
Sensors measuring axel and pressure of the tires to identify a bike.



All stations are powered by solar panels.

The bicycle traffic of both directions is measured and recorded locally on-board a receiver.

The recorded data is sent on a daily base via GPRS to the server application.



Solar panel

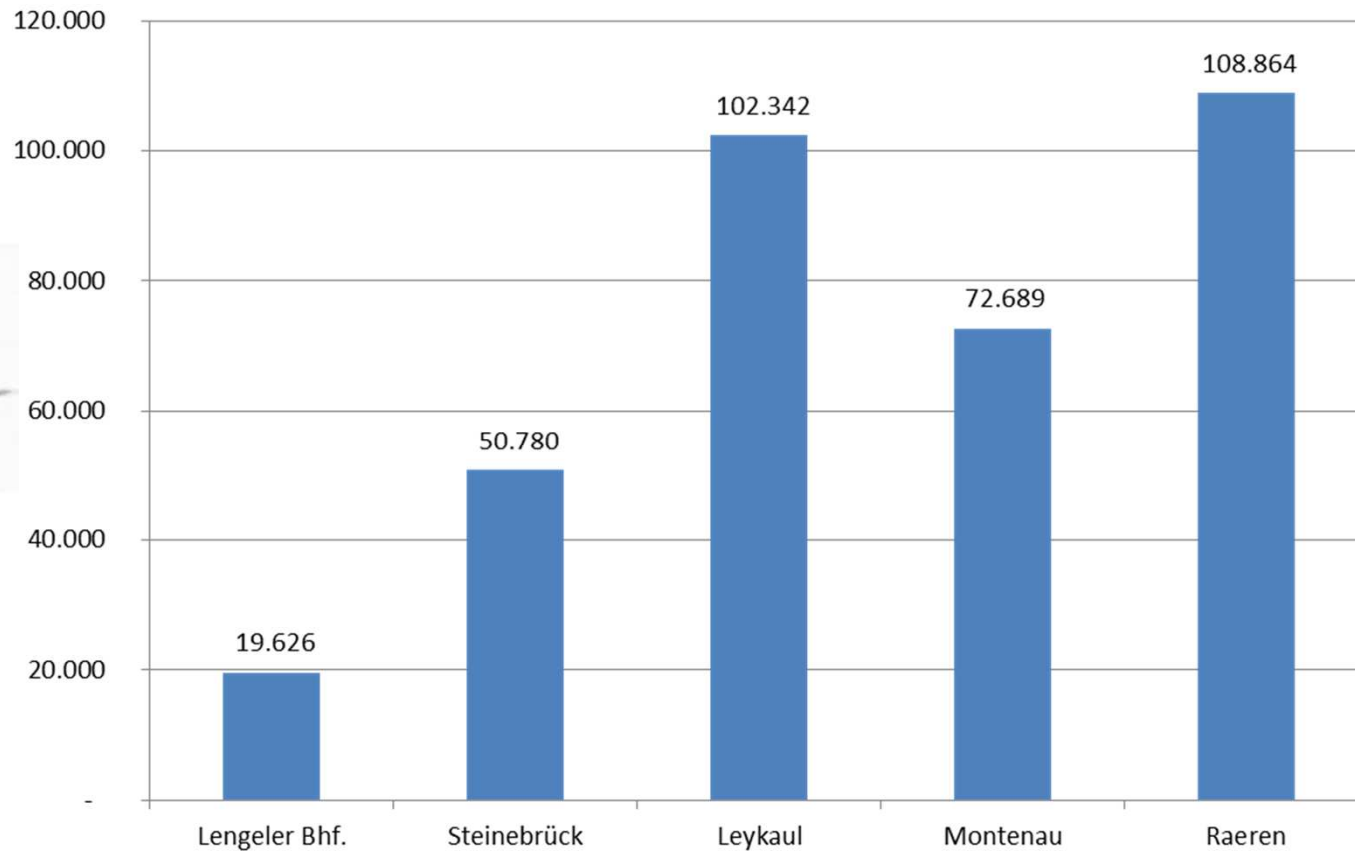
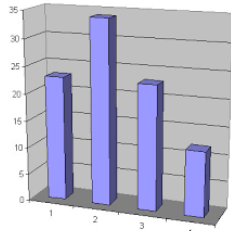
Receiver





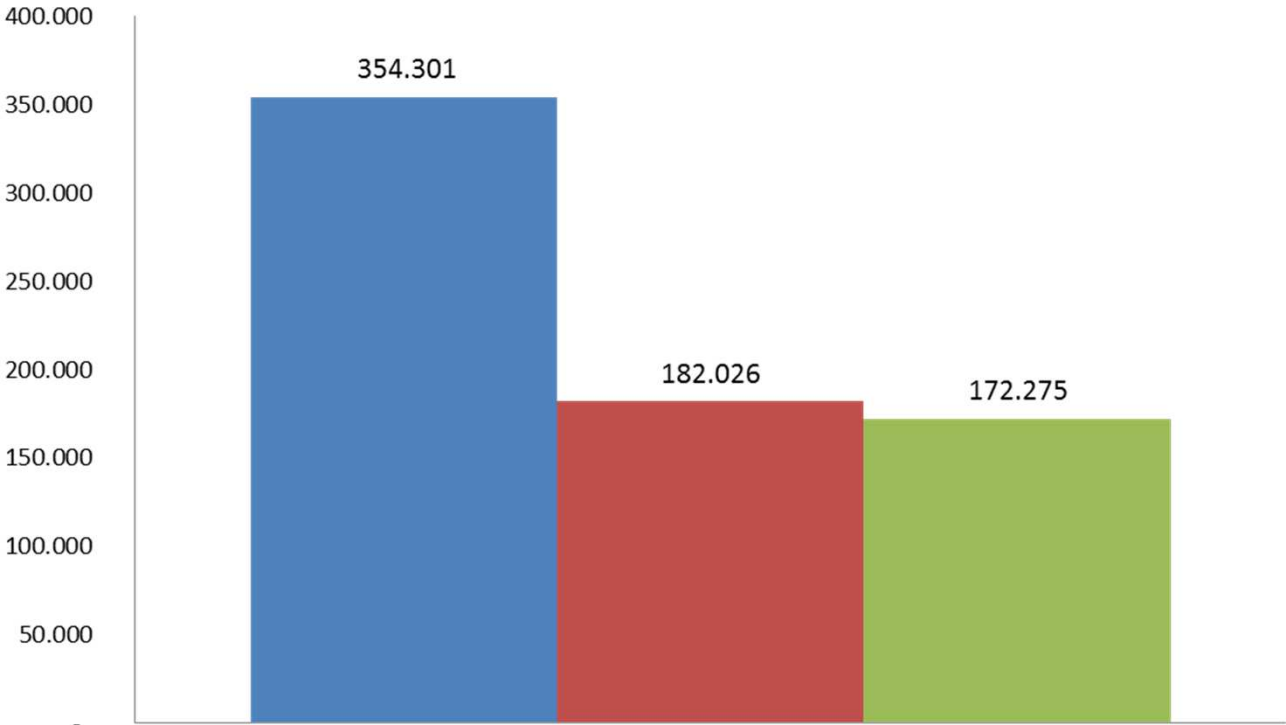
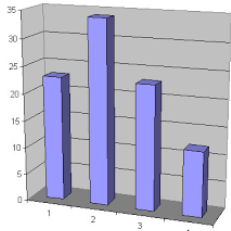
TOTAL NUMBER

2015: 354.301





DIRECTION

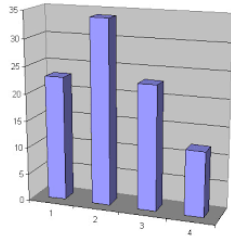


1

■ TOTAL ■ Direction LXB (South) ■ Direction GER (North)



DIRECTION



dir. LXB	dir. GER	site
46%	54%	Leykaul
49%	51%	Raeren

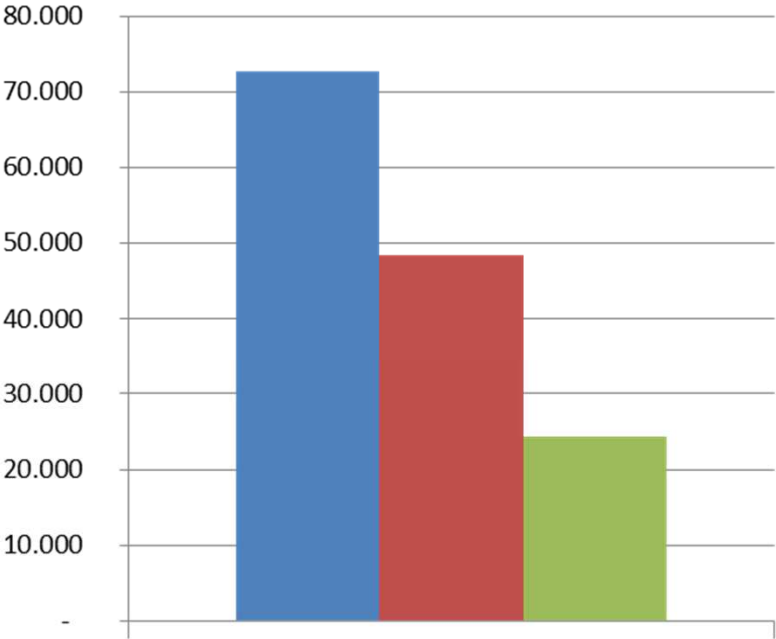
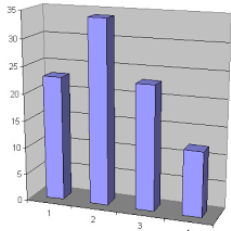


Both counting sites are close to the border of Germany and more densely populated areas (Raeren)

➡ many locals use the trail for a short trip



DIRECTION

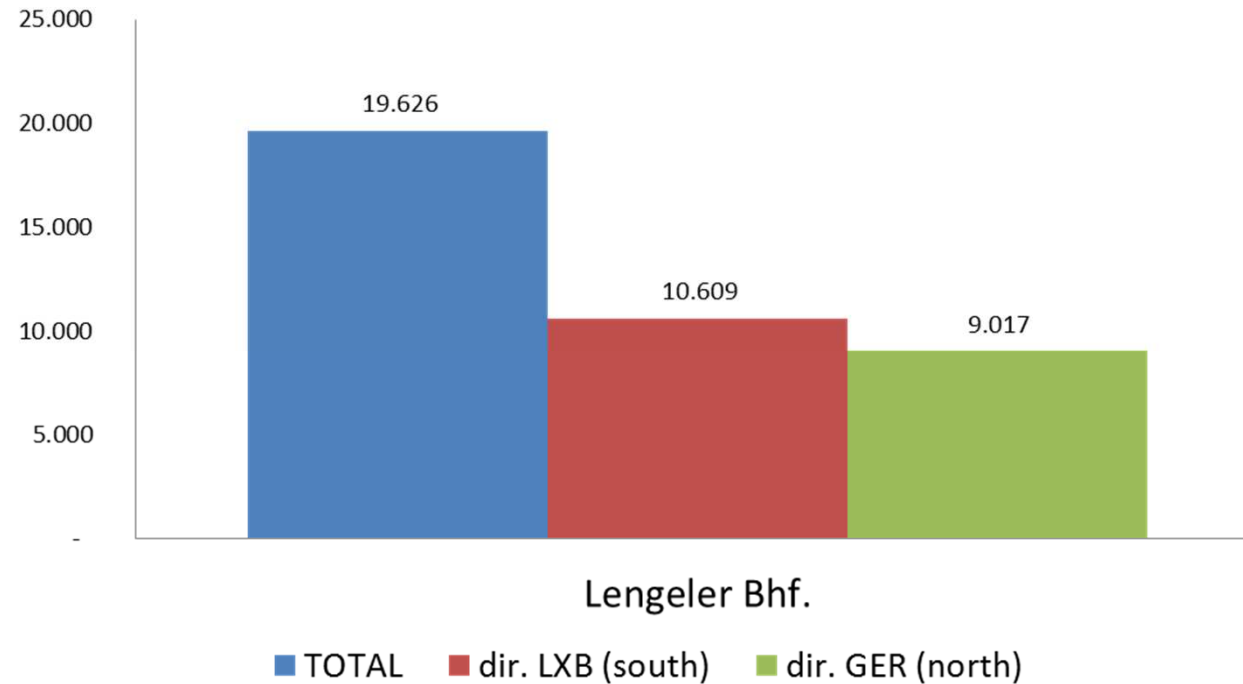
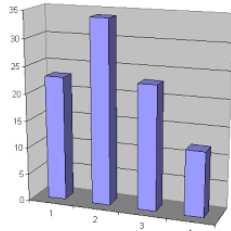


- TOTAL
- Direction LXB (South)
- Direction GER (North)

Montenau



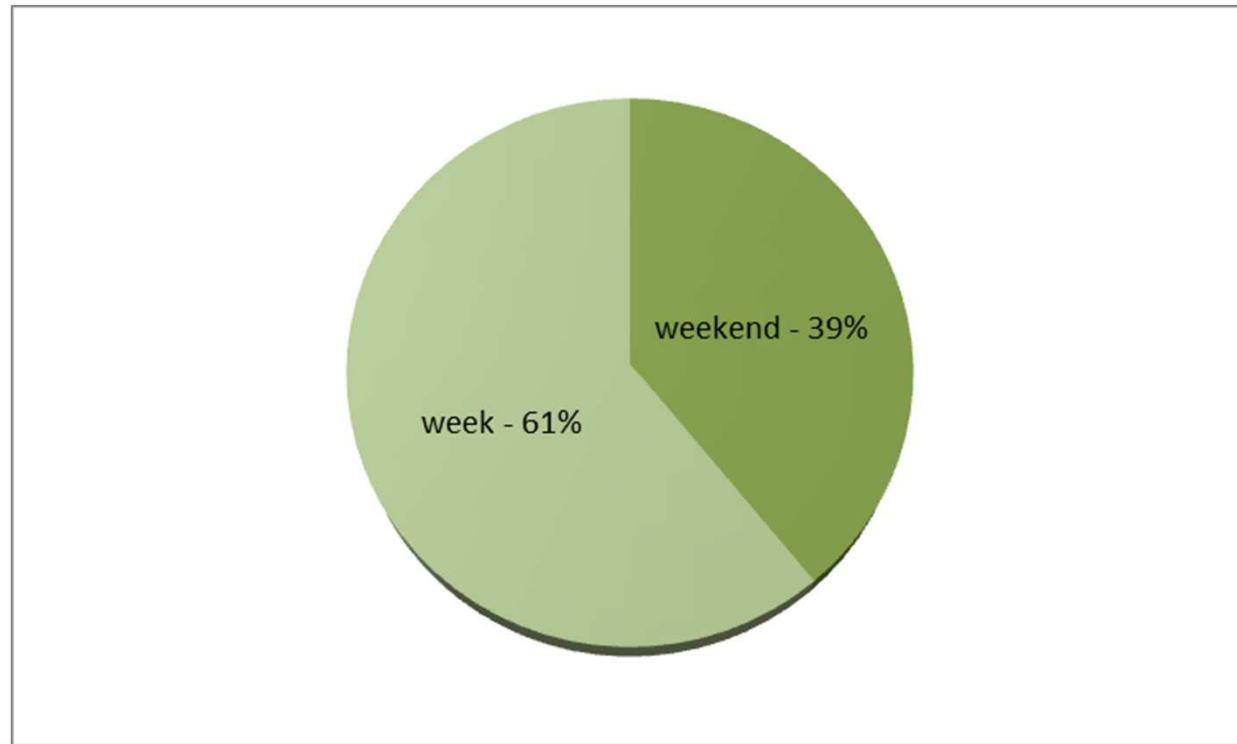
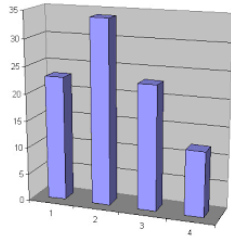
DIRECTION



We presume these cyclists to be more tourists than locals - cycling the whole trail?

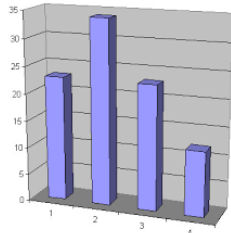


WHEN IS THE TRAIL USED?

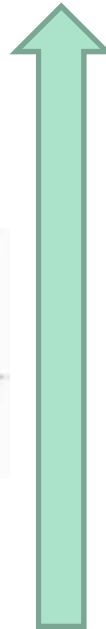




WHEN IS THE TRAIL USED?



LXB

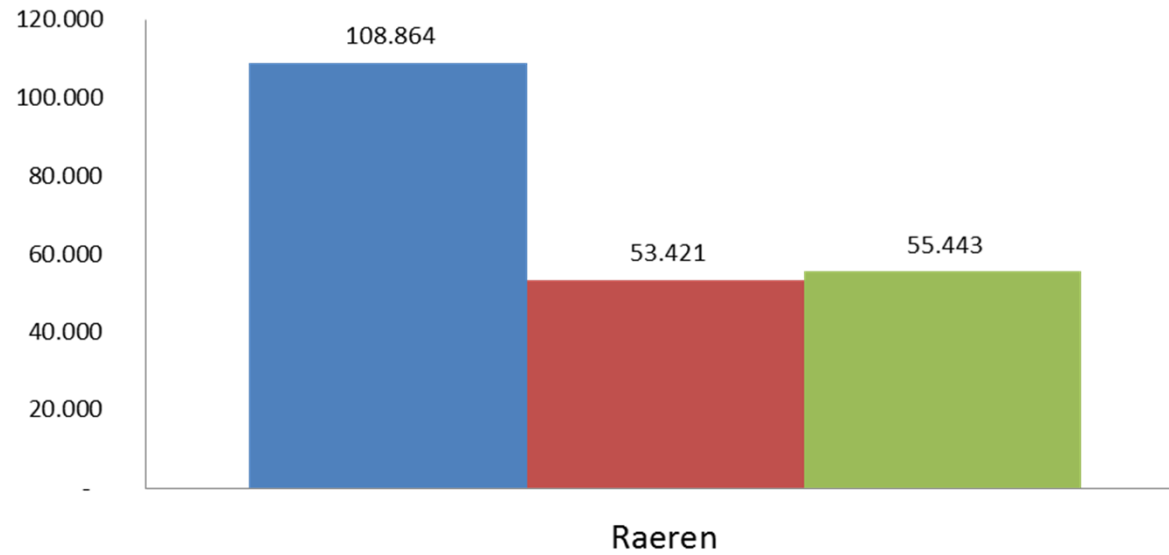
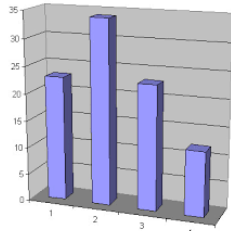


GER

Station	WE	Woche
Lengeler Bhf	38%	62%
Steinebrück	27%	73%
Leykaul	50%	50%
Montau	30%	70%
Raeren	41%	59%



DATA FOR INVESTMENT

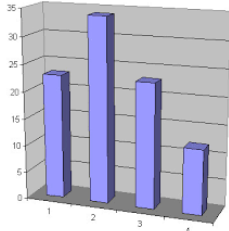


Höchstwert

	Gesamt	Ø i.d. (Mo-Fr)	Ø i.d. (Sa)	Ø i.d. (So)
Spitzenintervall	15:00-16:00	15:00-16:00	14:00-15:00	14:00-15:00
Σ	3894	15	27	40



UNEXPECTED DATA



Data shows peaks on the national holidays in Germany (3/10) and in Belgium (21/07).



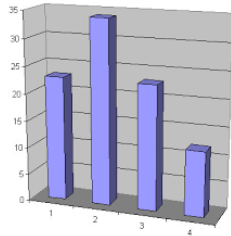
!! Peak on the 3/10 and the **22/07**

➔ Germans: one-day trip

➔ Belgians: trip with overnight stay



NEXT STEPS

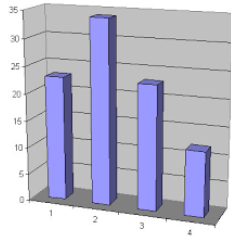


Compare this data with other data (increase of overnight stays, user statistics vennbahn.eu)



Identifying trends and seasonality

? Completing the quantitative data with more qualitative data collection (overnight stays...)



Thank you for your attention!

Your questions...?

Gudrun HUNOLD
Ministry of the German-speaking Community of
Belgium

gudrun.hunold@dgov.be

+32 (0)87 596.376